



recomLine Helicobacter IgG 2.0 recomLine Helicobacter IgA 2.0

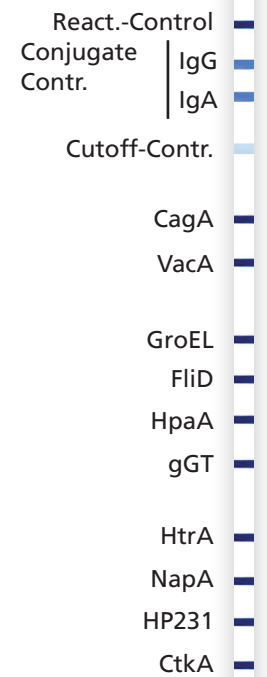
Line immunoassay using recombinant antigens for the detection and differentiation of IgG and IgA antibodies against Helicobacter pylori type I and type II

The gram-negative, microaerophilic bacterium was described in 1983 by Warren and Marshall. It colonises the human stomach and is able to persist there in the long term.

Approx. 50% of all humans worldwide are infected with Helicobacter pylori. While all those infected develop a chronic inflammation of the gastric mucosa, this leads to complaint symptoms only in a part of the patients. The Helicobacter pylori infection is believed to be linked to various gastric disorders, such as gastric ulcers, gastric adenocarcinomas and MALT lymphomas. As for its cause, host-related factors (social factors as well as nutritional and environmental factors) are, besides various virulent strains, also named as causal factors.

The recomLine Helicobacter 2.0 detects antibodies against ten selected Helicobacter pylori antigens. The detection of antibodies against the two most important virulence factors, CagA and VacA, is of high diagnostic significance. These two virulence factors markedly increase the risk of premalignant changes, gastric carcinoma, MALT lymphoma and ulcer. The humoral immune response to the biomarkers GroEL, HtrA, NapA, HP231 and CtkA is associated with a severe course of disease.

The recomLine Helicobacter 2.0 is the first serological test to present this selection of diagnostically relevant Helicobacter pylori markers.



Product advantages

Reliable diagnostics:

- Excellent correlation with the gold standard of Helicobacter pylori diagnostics – culture and histology
- Sensitivity: > 99% IgG-positive results in patients who are positive according to the gold standard
- Specificity: 100% IgG- and IgA-negative results in patients who are negative according to the gold standard
- Safe evaluation due to strip specific controls (reaction, cut-off and conjugate control)
- Take advantage of serology – anytime reliable results even with low bacterial load
- CE label: The recomLine Helicobacter 2.0 tests meet the high standard of the EC directive 98/79/EC on in vitro diagnostic medical devices

Meaningful diagnostics:

- Identification of highly virulent Helicobacter pylori type I infections by means of CagA
- Detection of antibodies against ten relevant biomarkers and virulence factors associated with severe courses of disease

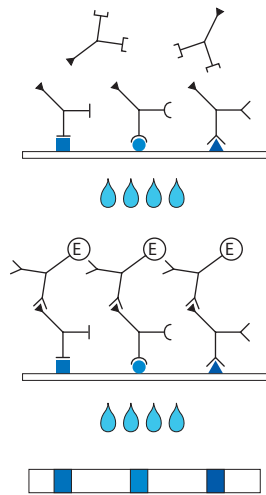
Fast and easy diagnostics:

- Fast and easy to use due to automation and software based evaluation
- Test procedure and reagents identical in all MIKROGEN line assays – reagents exchangeable

Recombinant Helicobacter pylori Antigens

Anti-gen	Description	Virulence factor	Specific for type I / type II	Anti-gen	Description	Virulence factor	Specific for type I / type II
CagA	Cytotoxin-associated gene A	✓	Type I	gGT	gamma-Glutamyl Transpeptidase	✓	Type I / Type II
VacA	Vacuolating cytotoxin A	✓	Type I / Type II	HtrA	High temperature requirement serine protease A	–	Type I / Type II
GroEL	Chaperone	–	Type I / Type II	NapA	Neutrophil activating protein	✓	Type I / Type II
FliD	Flagella hook associated protein	–	Type I / Type II	HP231	Oxidoreductase	–	Type I / Type II
HpaA	Neuraminylactose-binding hemagglutinin, Adhesin	✓	Type I / Type II	CtkA	Serin/Threonin Kinase	✓	Type I / Type II

Test Principle and Procedure



1st Incubation

A test strip loaded with *Helicobacter pylori* antigens is incubated with diluted serum or plasma in a dish for **1 hour**.

wash 3 times

2nd Incubation

Peroxidase conjugated anti-human antibodies (IgG or IgA specific) are added. Incubate for **45 minutes**.

wash 3 times

Color reaction

8 minutes after addition of the coloring solution, insoluble colored bands develop at the sites on the test strips occupied by antibodies.

Evaluation

Diagnostic Sensitivity

<i>recomLine Helicobacter 2.0</i>	Histology/culture positive samples (n=139)	
	IgG	IgA
negative	1	51
borderline	0	0
positive	138	88
sensitivity	99,3%	63,3%

Diagnostic Specificity

<i>recomLine Helicobacter 2.0</i>	Histology/culture negative samples (n=97)	
	IgG	IgA
negative	97	97
borderline	0	0
positive	0	0
specificity	100 %	100 %

Examples: IgG analysis of clinically defined patient samples

<i>Helicobacter pylori</i> positive / premalignant changes (int. metaplasia, atrophy)										
	React.-Contr.	IgG	IgA	Cutoff-Control	VacA CagA	FliD GroEL	gGt HpaA	NapA HtrA	CtkA HP231	Σ Sum of points
positive (HP Type I)	█	█	█	█	█	█	█	█	█	21
positive (HP Type I)	█	█	█	█	█	█	█	█	█	20
positive (HP Type I)	█	█	█	█	█	█	█	█	█	15
positive (HP Type I)	█	█	█	█	█	█	█	█	█	20

<i>Helicobacter pylori</i> positive / simple gastritis										
	React.-Contr.	IgG	IgA	Cutoff-Control	VacA CagA	FliD GroEL	gGt HpaA	NapA HtrA	CtkA HP231	Σ Sum of points
positive (HP Type II)	█	█	█	█	█	█	█	█	█	9
positive (HP Type II)	█	█	█	█	█	█	█	█	█	11
positive (HP Type I)	█	█	█	█	█	█	█	█	█	18
positive (HP Type I)	█	█	█	█	█	█	█	█	█	15

Article No.

4774 ***recomLine Helicobacter IgG 2.0***
Reagents for 20 determinations

4775 ***recomLine Helicobacter IgA 2.0***
Reagents for 20 determinations

Storage

+2°C - +8°C