

Beclin 2 Polyclonal Antibody

ORDERING INFORMATION

Catalog No.	Size
23011	100ug

Format: Peptide affinity-purified antibody in PBS, pH 7.4, 50% glycerol, 0.09% sodium azide.

Concentration: 1mg/ml

BACKGROUND

Autophagy is a catabolic process that results in the degradation of bulk cytoplasmic contents within autophagosomes and lysosomes. Beclin 2 is an Atg6/Beclin family member that functions in two distinct lysosomal degradation pathways, autophagy and the downregulation of certain seven-transmembrane-spanning GPCRs. Its role in GPCR lysosomal degradation does not involve Beclin 1 or other Beclin 1/2-interacting proteins such as ATG14 and VPS34 that function in autophagy. Its role in lysosomal degradation also appears to differ from other autophagy-independent functions previously described for yeast Atg6/Vps30 or mammalian Beclin 1, such as vacuolar protein sorting and EGFR degradation.

SPECIFICATION SUMMARY

Antigen: Synthetic peptide corresponding to mid-protein amino acids of human Beclin 2.

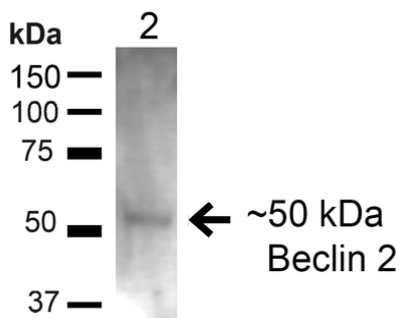
Accession no. NP_001277622.1 **Gene ID** 441925 **SwissProt** A8MW95

Host Species: Rabbit

Specificity: This antibody recognizes human and rat Beclin 2.

APPLICATIONS

Immunoblotting: use at 1-2ug/ml. A band of ~50kDa is detected.



Detection of Beclin 2 in 20ug rat liver lysate.

These are recommended concentrations. Endusers should determine optimal concentrations for their applications.

DILUTION INSTRUCTIONS

Dilute in PBS or medium that is identical to that used in the assay system.

STORAGE AND STABILITY

This antibody is stable for at least one (1) year at -20°C. Store product in appropriate aliquots to avoid multiple freeze-thaw cycles.

For in vitro investigational use only. Not for use in therapeutic or diagnostic procedures.