

DNA Polymerase Delta Monoclonal Antibody

ORDERING INFORMATION

Catalog no.	Clone No.	MAb Subtype	Size
13910	6196	IgG1	100ul

Format: 1.2mg/ml Protein G-purified in PBS, pH 7.2.

BACKGROUND

DNA polymerase delta is an essential enzyme in eukaryotes having a major role in genome maintenance through its involvement in replicative DNA synthesis and multiple synthetic repair processes. In addition to its 5'→3' DNA-directed polymerase activity, DNA polymerase delta possesses 3'→5' exonuclease activity that imparts the ability to remove newly added non-complementary nucleotides during replication.

SPECIFICATION SUMMARY

Antigen: Recombinant protein corresponding to aa 1-140 of the large subunit of human DNA polymerase delta.

Gene ID: 5424

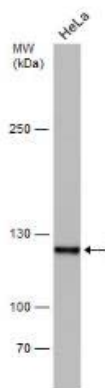
Accession no.: P28340

Host Species: Mouse

Specificity: This antibody recognizes human DNA polymerase delta.

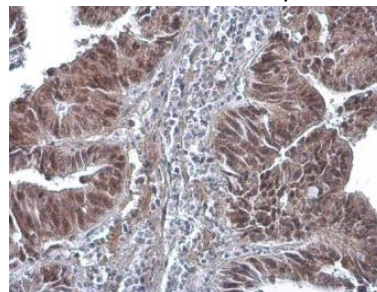
APPLICATIONS

Immunoblotting: use at a 1:500-1:3,000 dilution. A band of ~124kDa is detected.



Detection of DNA polymerase delta in HeLa cell lysate with #13910 diluted 1:1,000.

IHC: use at a dilution of 1:200 with antigen retrieval: citrate buffer, pH 6.0, 15 minutes.



Detection of DNA polymerase delta in paraffin-embedded human colon carcinoma.

Endusers should determine optimal antibody concentrations for their applications.

DILUTION INSTRUCTIONS

Dilute in PBS or medium that is identical to that used in the assay system.

STORAGE AND STABILITY

This product is stable for at least one (1) year if stored at -20°C. Store product in appropriate aliquots to avoid multiple freeze-thaw cycles.

For in vitro investigational use only. Not intended for therapeutic or diagnostic applications.