

## Tau Monoclonal Antibody

### ORDERING INFORMATION

**Catalog no.:** 57012

**Format:** 100ug (1mg/ml) Protein G-purified antibody in PBS, pH 7.4, 0.09% sodium azide, 50% glycerol.

### BACKGROUND

Tau is a subunit protein of one of the major markers of Alzheimer disease (AD), the neurofibrillary tangles. Tau protein has many unusual properties, such as its number of structural conformations and biochemical modifications (phosphorylation, proteolysis, and glycosylation), and its many interaction partners (mainly microtubules, but also other cytoskeletal proteins, kinases, and phosphatases, motor proteins, chaperones, and membrane proteins). The aggregation of Tau is toxic in cell and animal models, but can be reversed by suppressing expression or by aggregation inhibitors.

### SPECIFICATION SUMMARY

**Antigen:** Full-length recombinant human Tau441 (2N4R) P301S mutant protein pre-formed fibrils. In humans, mutation P301S gives rise to early-onset dementia.

**Accession no.:** P10636

**Gene ID:** 4137

**Host Species:** Mouse

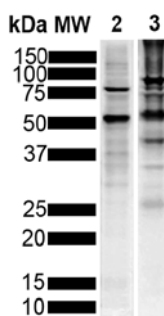
**Clone no.:** 1D5

**Antibody subtype:** IgG1

**Specificity:** This antibody recognizes human, mouse, and rat Tau.

### APPLICATIONS

**Immunoblotting:** use at 1-5ug/ml. A band of ~45.8kDa is detected.



Detection of Tau in 10ug of lysate of T-47d breast cancer cells (lane 2) and 20ug of mouse brain (lane 3) with #57012 at 1ug/ml.

These are recommended concentrations. Endusers should determine optimal concentrations for their applications.

### DILUTION INSTRUCTIONS

Dilute in PBS or medium that is identical to that used in the assay system.

### STORAGE AND STABILITY

This product is stable for at least one (1) year at -20°C.

*For in vitro investigational use only. Not intended for therapeutic or diagnostic procedures.*