

p53DINP1 Polyclonal Antibody

ORDERING INFORMATION

Catalog No.: 56223

Format: 100ug (1mg/ml) peptide affinity-purified IgG in PBS, pH 7.4, 0.02% sodium azide.

BACKGROUND

p53DINP1 (P53-Dependent Damage-Inducible Nuclear Protein 1) is a p53 inducible gene. A p53DINP1 antisense oligonucleotide inhibits, and overexpression of p53DINP1 enhances, Ser46 phosphorylation of p53, induction of p53AIP1, and cell death induced by DNA double-strand breaks. The p53DINP1 gene encodes two proteins of 27 and 18kDa designated p53DINP1- α and p53DINP1- β . p53DINP1 is expressed in many tissues and is induced by stress agents.

SPECIFICATION SUMMARY

Antigen: Peptide corresponding to aa 1-14 of human p53DINP1. This sequence is identical in the α and β isoforms of p53DINP1 and differs from that of mouse p53DINP1 by one amino acid.

Host Species: Rabbit

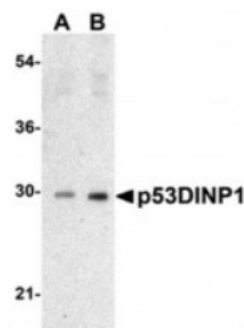
Gene ID: 94241

Accession no.: Q96A56

Specificity: This antibody recognizes α and β isoforms of human and mouse p53DINP1.

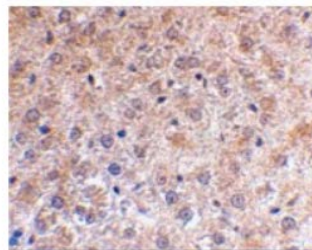
APPLICATIONS

Immunoblotting: use at 0.5-1ug/ml.



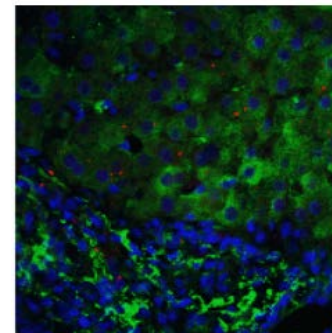
Detection of p53DINP1 in human lung tissue lysate with #56223 at (A) 0.5ug/ml and (B) 1ug/ml.

IHC: use at 2ug/ml.



Detection of p53DINP1 in mouse liver with #56223 at 2ug/ml.

Immunofluorescence: use at 5-20ug/ml.



Detection of p53DINP1 in human liver with #56223 at 5ug/ml.

DILUTION INSTRUCTIONS

Dilute in PBS or medium that is identical to that used in the assay system.

STORAGE AND STABILITY

This antibody is stable for at least one (1) year at -20°C. Avoid multiple freeze-thaw cycles.

For in vitro investigational use only. Not for use in therapeutic or diagnostic procedures.